

# **PixTalk – Installation and User Guide**

Gondy Leroy, PhD  
School of Information Systems and Technology  
Claremont Graduate University  
130 E. Ninth Street  
Claremont, CA 91711  
Phone: (909) 607 3270  
Fax: (909) 621 8564  
Gondy.leroy@cgu.edu

Gianluca De Leo, PhD, MBA  
Medical Lab & Radiation Sciences  
Virginia Modeling Analysis and Simulation Center  
Old Dominion University  
2118 Health Sciences Building Suite.3105  
Norfolk, VA 23529  
Tel: 757 683 6733  
Fax: 757-683-5028  
gdeleo@odu.edu

## CONTENTS

<b>PIXTALK - MINIMUM SYSTEM REQUIREMENTS</b> .....	<b>2</b>
Personal Computer operating systems and software requirements:.....	2
Mobile device requirements: .....	2
<b>1.INSTALLING PIXTALK</b> .....	<b>3</b>
1.1 Check for .NetCF:.....	3
1.2 Install the PDA application-PixTalk: .....	5
<b>2. ADDING IMAGES</b> .....	<b>5</b>

# Overview

This user manual provides instruction on installing and using the Pixtalk software.

PixTalk is the PDA software. It allows a user to choose and to combine images together to form a message.

Here we should have a list of what we are providing with the download

- 1) Pixtalk.exe (pixtak software application)
- 2) License agreement
- 3) Windows .Net 2.0 CF and
- 4) an IMAGES directory

## PixTalk - Minimum System Requirements

### **Personal Computer operating systems and software requirements:**

Below are the minimum personal computer requirements for supporting the use of the PixTalk software:

- Microsoft® Internet Explorer 6.0 or later

### **Mobile device requirements:**

Below are the minimum mobile device requirements for using the PixTalk software:

- Mobile device with touch screen
- Microsoft .NET Compact Framework 2.0

# 1. Installing PixTalk

The software installation process consists of the following steps discussed in detail below.

## 1.1 Check for .NetCF:

The installation of the PDA Application includes the following steps described in detail below.

Before you install the *Pixtalk* application on your PDA, please check the Operating Systems version of the PDA first. If the Operating Systems version is “Windows Mobile 2003 SE” or “Windows Mobile 5.0”, make sure you have installed “Windows .Net 2.0 CF” on your PDA. If the Operating Systems version is “Windows Mobile 6”, you do not need to install the “Windows .Net 2.0 CF”

Following the steps below, you can check the software you installed on your PDA.

1. Click “Start”→”Settings”. (Figure 1.22)



Figure 1.22

2. Select the “System” tab and click on “Remove Programs”. (Figure 1.23)

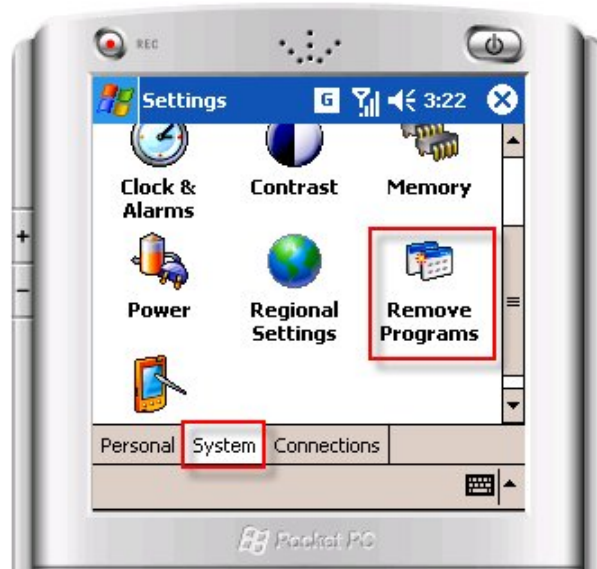


Figure 1.23

3. Check to see if you have “Microsoft .NET CF 2.0”. (Figure 1.24)

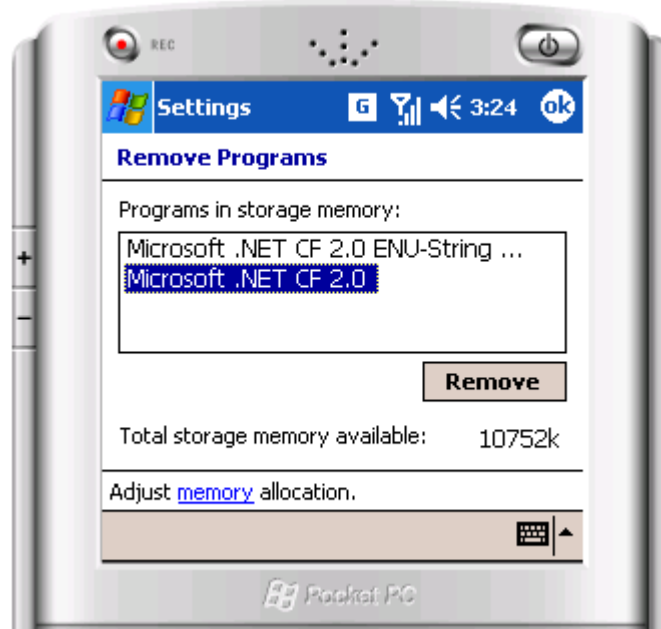


Figure 1.24

If you have not installed “Microsoft .NET CF 2.0” on your mobile device, follow the steps below.

### **1.1.1 Install Windows .NET CF 2.0**

#### **IF**

1. The application program to install “Microsoft .NET CF 2.0” is provided in the setup files downloaded.
2. First, Connect the Smartphone to a local computer.
3. The files on the Smartphone can be accessed as a new hard drive in “My Computer”
4. Copy the file “NETCFv2.ppc.armv4” from the package downloaded to “My documents” folder in the new hard drive.
5. By disconnecting the Smart-phone with the local computer, find the folder “My documents” in the Smartphone through its own interface  
Start button in smartphone→Programs→File Explorer→My Documents.
6. Select “NETCFv2.ppc.armv4” and run the program to complete installing **.NET CF 2.0**.

### **1.2 Install the PDA application-PixTalk:**

1. Connect with your USB cable the Smartphone to your local computer. After few second you should see a new hard drive.
2. Copy the file “Pixtalk” from the package downloaded to “My documents” folder in the new hard drive.

After copying PixTalk, you need to add a set of images to the new drive.

## **2. Adding images**

1. The “IMAGES” directory in the downloaded package contains the basic set of images we have designed free copyrights.
2. The “IMAGES” directory contains three types/levels of images: Images with text, only images and only text. Each of the type contains a directory “folder” inside it.

To add a specific type of images to the Smart-phone, copy the directory “folder” of the desired type to “My Documents” in the Smart-phone as explained in the previous section.

3. After adding desired images, go to Start on Smart-phone and click “Pixtalk” which loads the images automatically for usage.
4. Adding any personalized image to the Smart-phone, requires copying it to the directory “folder” in “My Documents.”

Note: PixTalk application automatically retrieves images from “folder” directory in “My Documents” for display, so the name of directory should never be changed.

Please do not hesitate to contact us if you have any questions.